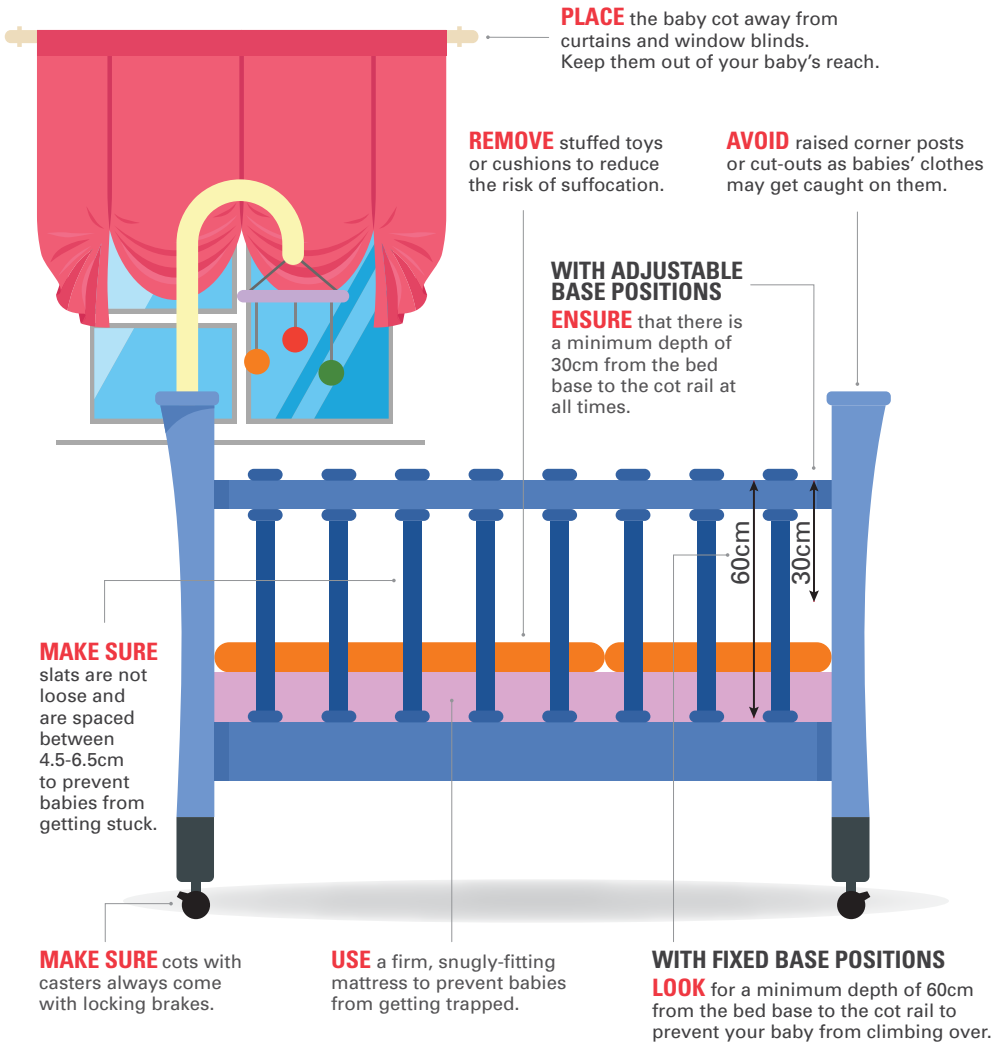


THE ESSENTIAL SAFETY GUIDE TO BABY COTS



Visit
www.go.gov.sg/childrens-safety
for more tips on children's products
and apparel.

**CONSUMER
PRODUCT SAFETY
OFFICE**

THE ESSENTIAL SAFETY GUIDE TO STROLLERS

MAKE SURE the harness cannot be easily unbuckled by children.

MAKE SURE your child cannot slip through the harness after it is secured.

PREVENT strangulation by tying up or cutting excess length from the harness straps.

AVOID hanging heavy items from the handlebars to prevent tip-overs.

LOOK for one with a 2-step locking system or multi-lock system. They prevent accidental collapsing of the stroller.

FOR NEWBORNS

CHOOSE strollers that can recline over 150°. They provide a comfortable lying position for newborns who cannot hold their heads upright.

ENSURE that the stroller is suitable for the age and weight of your child.

APPLY the brakes and push the stroller. Make sure the wheels do not slip.



Visit www.go.gov.sg/childrens-safety for more tips on children's products and apparel.

**CONSUMER
PRODUCT SAFETY
OFFICE**